

Continuous Carbonization Furnace

High-efficiency carbonization for biomass & charcoal production

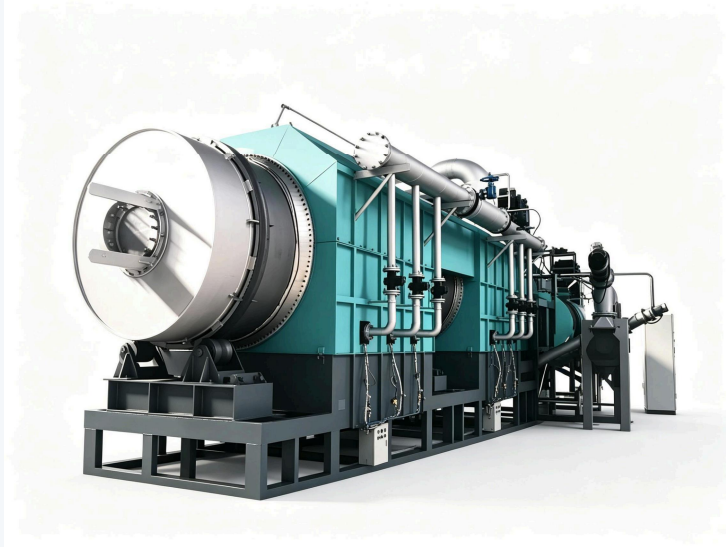


🌿 80–500 kg/h

💎 High carbon yield

🌿 CE Certified

🔗 Manto Machinery · Professional Carbonization Equipment Manufacturer



⚙️ Continuous carbonization furnace – 24/7 uninterrupted operation

Advanced Carbonization Solution

Manto Machinery continuous carbonization furnace series adopts advanced uninterrupted carbonization technology matched with automatic feeding, discharging and constant temperature control systems. Specially designed for carbonizing wood chips, bamboo scraps, wood flakes, fruit shells, rice husks, coconut shells and other biomass wastes, this professional carbonization equipment efficiently converts waste crop and biomass resources into high-value finished charcoal for diverse industrial and civil uses.

Key advantages: Stable 24-hour uninterrupted continuous carbonization operation, ultra-high carbonization efficiency and waste material utilization rate, intelligent constant temperature control for stable finished charcoal quality, and high-temperature resistant integral furnace structure that ensures long service life. The standardized modular design enables seamless connection with drying and briquetting equipment to form a fully integrated charcoal production line.



High Output

80–500 kg/h capacity



Sturdy & Reliable

Low maintenance cost



Uniform Heating

Consistent charcoal quality



Easy Operation

Automated control

Key Applications

Raw Wood Charcoal

Bamboo Charcoal

Machine-made Charcoal

Coconut Shell Charcoal

Industrial Carbon

Global Export Business

Professional Custom

Full Plant Design

Reliable After-sales

🌲 Applicable Raw Materials



🌲 Wood chips

🌾 Rice husks

🍎 Fruit shells

🥥 Coconut shells

Moisture content < 15% · Feed size < 10cm

🔗 Output & Applications



🔥 BBQ charcoal

● Activated carbon

🏭 Industrial fuel

🌱 Biochar for soil

🔧 Filtration media

High fixed carbon · Low ash content · Ideal for BBQ, industrial filtration, deodorization, soil amendment and energy applications

📈 Typical Carbonization Effect

High carbon yield ($\geq 80\%$)
Uniform charcoal with excellent hardness
Low volatile matter

🌿 Eco Benefits

1 ton biomass \rightarrow 0.3–0.4 ton charcoal
Reduces greenhouse gas emissions vs. open burning



🌲 Complete carbonization line – efficient & stable

Technical Specifications

Model	Power (kW)	Output (kg/h)	Equipment Weight (t)
800	21	80-200	14
1000	21	120-300	16
1200	24	180-350	18
1500	30	200-400	23
1800	36	300-500	25

* Parameters based on standard raw materials. Actual output varies by material type and moisture content.

🔧 **Optional Upgrades:** Automatic feeding/discharge system · Gas cleaning unit · PLC control panel · Customized furnace dimensions.

Carbonization Furnace Highlights

🕒 24/7 continuous operation

⚙️ Fully automated

🌿 Low emission

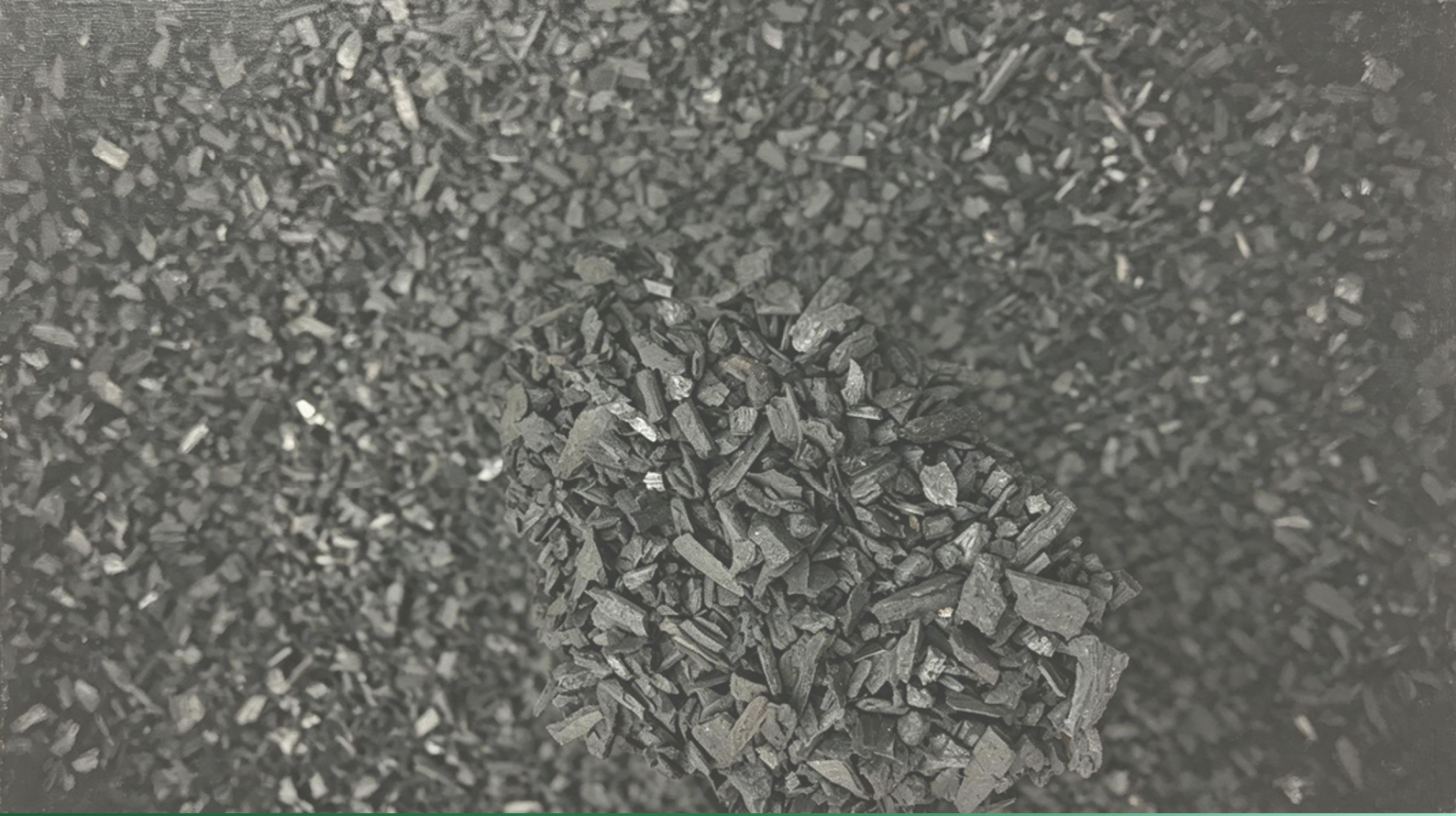
📈 High carbon yield

🏆 CE Certification

🚚 48h After-sales Response

👨‍🔧 Free Line Design

📞 7×24h Tech Support



Sustainable Carbonization Solutions

Reliable Partner for Charcoal Production & Biomass Utilization

Henan Manto Machinery Equipment Co., Ltd.

📍 Zhengzhou, China

📞 +86 18539921788 | ✉️ zzmhcx@gmail.com | 🌐 www.mantocharcoal.com

🌱 CE Certified · Global Service

© Manto Machinery · All rights reserved